



# TGII

THE GATEWAY TO INDIA

---

*Be a part of the India Story*



# IN A NUTSHELL

We are a one - stop - shop for all things India !!



# The Gateway to India

**It is a way to showcase India as a land of many opportunities, to the rest of the world.**

**Proudly sharing the India story, her culture, heritage and opportunities, facilitating business, enabling Investments and more !!**

# ABOUT THE FIRM

## Our history and approach

**We are a boutique strategic consulting firm, that helps build a bridge to India.**

**We as a firm facilitate entry of foreign companies across different sectors and strategically partner with them in their plans to establish business ventures in India**

**We forge these partnerships, by way of **JV** or direct investment as a **one - stop - shop** and offer **tailor made** solutions that cater to all their business needs, with the help of a strong & experienced **team of investment bankers, lawyers, accountants and other partners.****

Our strength lies in the experience we bring and the partnerships we have, across sectors

# Values of the Firm



## Partnership

**We believe in teamwork and working closely together with our partners, and servicing the client.**



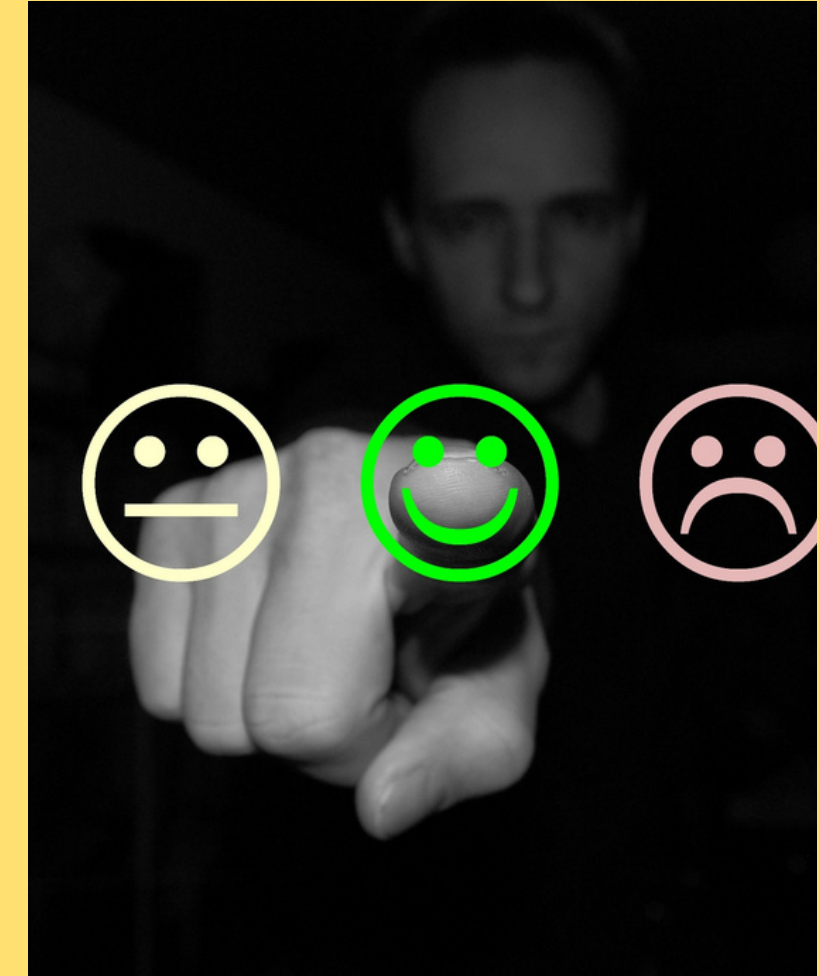
## Excellence

**We hold ourselves and the companies we work with to the highest standards.**



## Integrity

**We believe in trust and mutual respect.**



## Quality Service

**We believe in offering quality service each time to our clients and ensure they are satisfied.**



We connect Global clients,  
mainly Start Ups, SMEs,  
MSMEs to Local companies,  
building synergies,  
collaboration and partnerships  
from around the globe !

**Who is our client ?**

# What do we offer our clients



India operates, and treats our guests, on the principle of "Atithi Devo Bhava"  
(Our guest is an incarnation of the Lord himself)



## **MARKET RESEARCH**

---

**Market research to understand the macro & micro business environment, your ideal customer, their buying behaviours, market dynamics, competition as well as how your product / service will be positioned and operate, is the best first step to take and which we can help with**

**Connect with us to know more**



## **IDENTIFY IDEAL JV / STRATEGIC PARTNER**

---

**Once you have connected with us, we dive deep to understand your exact need, and through our experience of working on different deals and aspects of the business, advise you about the best route to take, help you identify the right JV partner / organisation, that matches your business and values, thus facilitating the best investment**

**Connect with us to know more**





## FUNDING & FINANCE

---

**Based on the business need and plan of developing it, in the Indian market, we can help in identifying and connecting with the right funding partners or investors as the case maybe, thus ensuring the client business takes off**

**Connect with us to know more**



## BUILDING THE LEADERSHIP TEAM

---

**We understand the importance of having a strong leadership team that once hired, can then take the business into the next leap. We can help you hire your first leadership team, through our extensive understanding and deep network in the India market, and relevant experience of the domain, across sectors and with the proven success across a few decades**

**Connect with us to know more**



## **START UP ADVISORY, INCLUDING CROSS CULTURAL LEADERSHIP & TRANSITION TRAINING**

**Getting started is always easy.. sustaining it is the challenge..  
With our experience in the Start Up advisory domain, we can help with setting up the organisation and other facets, including structures, policies, processes, for the smooth functioning of the business.  
It is crucial to understand the culture of the land that you intend to set up business, in order to be successful.  
We partner with you, in this cross cultural sensitizing journey by offering Cross Cultural Leadership & Transition training & Coaching for Expat professionals & Leaders**

**Connect with us to know more.**



## **SOFT LANDING SERVICES**

**India is a vast country, and with multiple agencies to deal with for various aspects of getting business and life up and about. While it is easy in reality, but chasing multiple people to achieve deliverables, can feel like a daunting experience. The Soft Landing services which caters to the end to end gamut of setup and delivery, establishing, and ensuring that the Expat partner and her / his team/ family is well taken care of and settled is a critical aspect involved in the setup.**

**Connect with us to know more..**

# Map to Market Leadership

## OUR 3-PHASE APPROACH



### Phase 1: Attract

Ensure our services stand out from the competition



### Phase 2: Engage

Establish brand loyalty



### Phase 3: Retain

Give customers reasons to stay

# How do we facilitate the process ?

01

Through our trusted network, identify and establish the right opportunity

Understand and identify the exact need of the client

02

03

Plan and Execute with quality and timelines in mind

# Some Value Added Services

## Student Exchange & Internships

Student exchange has always been a popular and well established method of experiencing cultures and countries.

We would be happy to facilitate

## Hi-End Luxury Tourism

India is a land of rich culture, heritage, traditions, a melting pot of cultures, people and languages, a land of vibrant colours, Many small countries rolled up into one beautiful and diverse country.. Blessed with an equally diverse flora & fauna.

One should not miss the opportunity of exploring these treasures.

We will be happy to organise safe, and luxury trips personalised to match your sensibilities.

## Our capability for providing these services

Our team of partners and organisations associated with us, ensure that our client has a complete experience of the country, it's people, hospitality and professionalism delivered with the excellent standards of quality and service

## Bookings on for 2022 onwards

These specific services can be offered as stand alone services too, if you are still deciding about your business set-up in India, but would still like to explore the country.

We are now taking bookings for 2022 to ensure highest safety standards and due precautions are taken. **Connect to know more**

# Leadership : Aparna P Ranadive, Founder - CEO

Aparna P Ranadive is a senior HR Professional, Change management, Start up specialist & International trade professional, with an experience of over 2 decades in the field of Human Resources, Change Management, Start Up Advisory & International Trade & Business Development.

An alumni of NMIMS, Mumbai and, ISB Hyderabad, she has worked with some of the most professional organisations in the Indian industry, such as Hypercity Retail, Sony Entertainment, Ambit RSM, The Times of India, Tata Teleservices & Reliance Consultancy, to name a few, Heading the HR function and as part of the Leadership teams. Her last assignment in the Corporate was as SVP & Head HR with Hypercity Retail India Ltd.

Over the last 5 years, as Founder & CEO of Practical Magic Advisory Services & Solutions, and select partnerships, she has been able to contribute to varied industries and organisations in different phase of their life cycle, including start ups. She also works with senior professionals helping them as a Transformational Coach.

Aparna leads the Mumbai Chapter of Global Chamber, an international chamber of commerce and business development, as Executive Director

The Gateway to India <sup>™</sup> , is another venture initiated by Aparna, which functions as a one-stop-shop for companies and countries wanting to invest in India, by not just connecting, but also hand holding them through the entire journey



# CONTACT US

**Aparna P Ranadive**

+91-9820230068

---

aparna.ranadive.tgi@gmail.com

<https://ecard.link/card/8648/2086>

---



